

November 2017

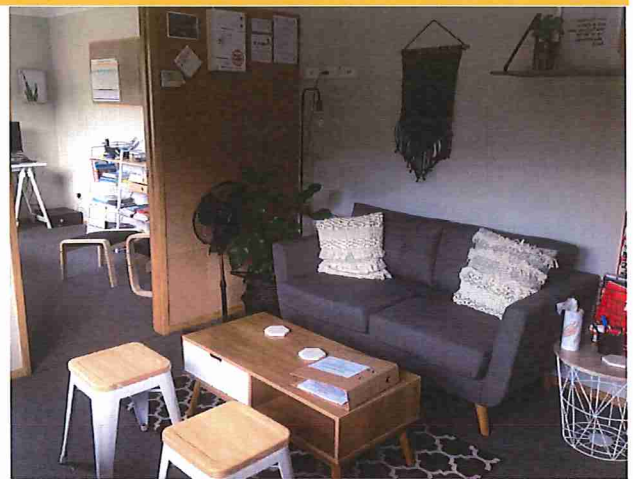
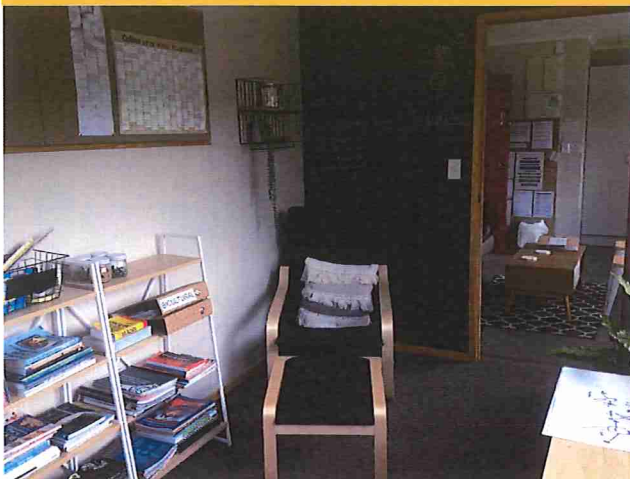


Whenuakite Country Kids—Where children connect with their community.

W.C.K Shoutout 2017!

We would like to give a great big shout out to Tracey Bowen, and her helper Natalie Collicott for the amazing make-over in our teachers staff room and workspace. Tracey volunteered 3 days of her time to make this room an amazing space for our teaching team to hangout in. THANK YOU SO MUCH TRACEY.

If you would like any help with re-designing your house we would highly recommend Tracey from Eve Design— evedesign20@gmail.com



A big shout out to Amy Hodge for the resources that she has donated to the centre.

The fire truck has been a real favourite! of the Tui Room.



We have started a new art project at the centre. There have been many discussions over the past few years about our road frontage and what it portrays to others. The committee have had many discussions with Jazz to gain an artists perspective. We recently had a student, Melinda, who is also an artist and we felt it was a great time to get the project underway. Jazz shared with Melinda and Trish the Pou idea and we believed that this fitted in really well with the strategic planning that we have already begun. Jazz and Melinda went and carried out some research of other Pou projects in our area and went over to look at the schools Pou's then shared these with the children. We placed a conversation onto Storypark and we got a great response from many parents of offers of material to keep the project cost down.

A big shout out to the Walker family for the fence posts, for Bahr family for the paints and for the Rowland family for the cement.

We now would like to invite families to get creative and come up with some art designs of their own to put onto the remaining Pou's. Below are some examples of other creative Pou's at our local schools Whenuakite, Tairua and Hikuai.

