

Whenuakite

# Country Kids



## Paenga-whāwhā April Pānui 2023

### *Kia ora e te whānau,*

*Paenga-whāwhā, April has been a busy month of new arrivals! Congratulations to the Bailey and Carter families on the safe arrival of the two new pēpi into our WCK whānau!! Haere mai, welcome to the world; Flynn's little sister Penny Bailey ❤️ and to Jack's little brother Quinn Carter ❤️ April was also a busy month for fundraising events, with the Easter break and school holidays 😊 Ngā mihi nui to our awesome fundraising committee and to all of you for your continued support and generosity. Our community-based ece centre is the amazing place that it is because of you ❤️*

*In April, we have also enjoyed making the most of the school holidays to play over at Whenuakite School, reflected on ANZAC day with ngā tamariki, and held our annual Chicken Dance Fundraiser in the centre. This was again another fun event and huge success for the centre! Arohanui from us all at Whenuakite Country Kids x*

### **Centre Celebrations:**



Rā whānau ki a koe, Happy Birthday to the following tamariki who celebrated birthdays in Paenga-whāwhā, April; Happy 4<sup>th</sup> Birthday to Tui Clow, Happy 5<sup>th</sup> Birthdays to Brodie Hopkins and Tanner Brockett. And Happy Birthday to our lovely Kaiako Crystal! We hope you all had lovely birthdays celebrating with friends and whānau ❤️

Nau mai haere mai, welcome to Charlotte McKeever and Thea Gillespie in the Tūi ruma, and to Tui Clow in the Kererū ruma. ❤️ It is lovey to have you all here with us and we look forward to walking alongside you throughout your learning journey here at Whenuakite Country Kids ❤️

In April, we also said haere rā to our friends; Nova Thompson and Betty Hodge, who have left the area ❤️ And to Noah Probett and Brodie Hopkins who have both started at Whenuakite School this term ❤️ We miss you all! x

## Important reminders:

### Missing gumboots!

We have a size 9 pair of red-band gumboots missing. Please check if you have an extra pair at home, ngā mihi 😊



### Kia Manawaroa:

Kia Manawaroa is the Ministry of Education's pānui for whānau Māori. Read the Poutu-te-rangi, April issue of Kia Manawaroa here:

[Kia-Manawaroa-28-april-2023](#)

### Upcoming Dates:

- **Bike Day-** Rātū, Tuesday 9<sup>th</sup> May
- **Welcome morning tea for Anne and Jane-** Rāapa, Wednesday the 10<sup>th</sup> May, Shared morning kai, 10am all welcome 😊
- **Westpac Rescue Helicopter fundraiser** Superhero dress up day, Rātū, Tuesday 16<sup>th</sup> May
- **Pink Ribbon Morning Tea-** Rāpare, Thursday 25<sup>th</sup> May 10am
- **Centre Working Bee** 😊 Rāmere, Friday 26<sup>th</sup> May 3pm

### Holiday Closure 2023 Dates:

- **King's Birthday:** Rāhina, Monday 5<sup>th</sup> June.
- **Centre Winter Closure:** First week of School holidays: Monday 3<sup>rd</sup> -Friday 7<sup>th</sup> July.
- **Matariki:** Rāmere, Friday 14<sup>th</sup> July



# Centre Happenings

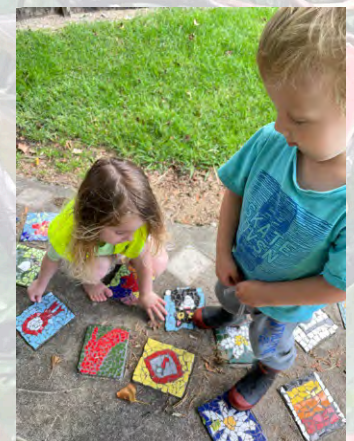




# Supporting Transitions to Kura, School



We enjoyed heading across the road to Whenuakite School during the April School Holidays. We loved exploring the playground, running on the fields and playing some sport together 😊 This helps ngā tamariki become familiar with the primary school environment and provided an opportunity to test our physical abilities in a larger, more challenging environment.







# Te Whariki: Strand- Mana Atua Wellbeing

Tamariki experience an environment where health is promoted. Their emotional well-being is nurtured and they are kept safe from harm.

Health is promoted and modelled at Country kids in a holistic way. The routines throughout the day provide hygiene teaching and habits to maintain te oranga nui. Examples include: hand washing, kai together, discussing healthy food and connecting food choices with well-being.

Emotions are discussed and safely expressed alongside deliberate teaching of breathing, stepping aside and other useful life long strategies to navigate strong feelings. Intentional teaching using visual cues, supports tamariki to gather emotional intelligence. Intrinsic motivation, trusted relationships and tamariki agency are all cultivated to encourage tamariki to express themselves and their needs, te whakahua. Thus we endeavour to create an environment that fosters confidence, self regulation and self esteem.

Tamariki are encouraged and scaffolded to come up with their own solutions in conflict resolution and problem solving. Shadowing and communication between kaiako is used to support tamariki who may be experiencing a particularly difficult time for a myriad of reasons or just be struggling in one aspect of their well being. Thus we are protecting and nurturing the health and wellbeing of all.

With our equipment, activities, outdoor space and trips opportunities for safe yet challenging physical activity are plentiful. Boundaries, predictable routines with flexibility foster self-worth, identity, confidence, belonging and fun.

Tamariki seem to thrive on consistent messages within our centre and the sense of security especially during transitions such as drop off. As well as familiarity, change and new experiences are sprinkled in to encourage the confidence to embrace change.

Wellbeing is increasingly being viewed as a complex concept that includes the child- body, mind and spirit, the parent, and wider relationships alongside the environment. It is important that as kaiako, we are sensitive to the various ways that the diverse range of families and their views on well-being are discussed and represented in Country Kids. So that we may all understand and seek to promote wellbeing for all.

Mana atua | Children understand their own mana atuaanga - uniqueness and spiritual connectedness. Thus display a sense of well-being and resilience. Anne.



# Ministry of Education (MoE) Funding- Pay Parity Review Consultation

At WCK, we are always advocating for our teachers to receive the financial recognition they deserve for their qualifications and teaching experience. We are elated that the centre managed to opt into the initial MoE 'Pay Parity' funding rates in Jan 2022, and the 'Extended Pay Parity' rates from Jan 2023 for our qualified teachers. While these are steps in the right direction, unfortunately even these MoE rates are still lower than the current rates provided to our colleagues in kindergarten.

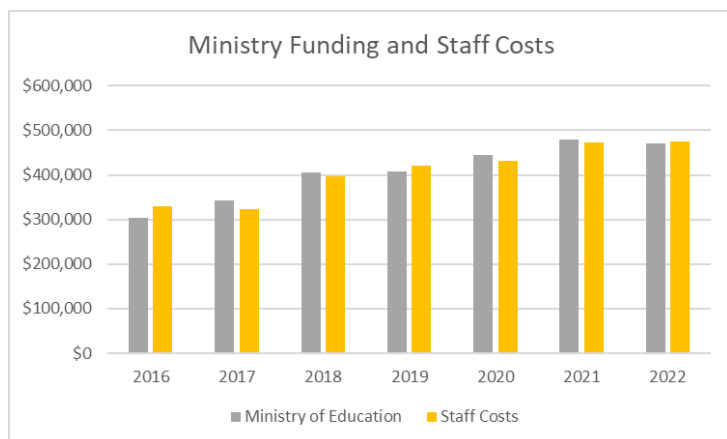
The MoE is now undertaking consultation on their proposed review of the ECE pay parity funding model. The WCK finance committee have been attending online hui to keep up to date on any proposed changes to our funding. Consultation runs from now until the 23<sup>rd</sup> of May. You can find information on this here:

[Education and care funding review-pay parity - Ministry of Education](#)

[Summary-for-early-childhood-services-pay-parity-review-consultation.docx](#)

What we have learnt so far is that the current and proposed MoE funding is clear: they do not fund everything, and it is their expectation that centre's will source up to 20% of their operating expenses through charging fees and other sources of income. For our not-for-profit centre, it is important to us that parent fees remain as low as possible so that ece is affordable for whānau. We work hard to keep to a tight budget each year so that any funds available can go back into operating a high-quality centre for ngā tamariki. This is supported through fundraising and applying for grants and funding to ensure that the centre can continue to be a beautiful place for ngā tamariki, whānau and staff to come to each day. We cannot thank our amazing fundraising committee and all of you enough, for the many voluntary hours of service and generosity that you give to our centre ♥ Ngā mihi!

We look forward to the outcomes from the MoE funding review consultation and will keep you informed of any changes.







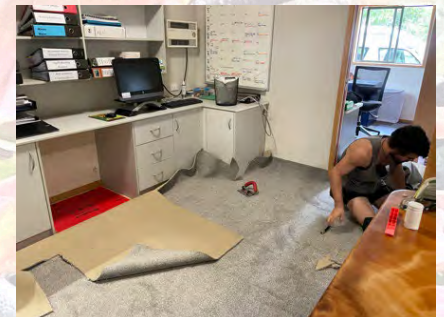
## **POLICIES CURRENTLY UNDER REVIEW:**

HS17 EXCURSIONS, HS31 CHILD PROTECTION POLICY

We value your contribution, so please share your ideas and suggestions for our policies under review. These can be located in the 'Policies Under Review' folder in the whānau bookshelf at the office.

## **Community Contribution :)**

Check out all of the awesome koha which our community have given to WCK this month 😊 We really appreciate the generous support which our community-based centre receives. You are AMAZING! Thank you! 😊



**Ngā mihi nui mo te tautoko me te aroha,  
a BIG thank you for all your support and love x.**





# The 2023 WCK Chicken Dance fundraiser



Ngā mihi nui, A MASSIVE Thank You to everyone who supported our centre's annual Chicken Dance fundraising event this year ♡🙏♡ It was a huge success, raising \$5,665.00!!! A very special thank you to our AMAZING WCK fundraising committee, Sophie, Anna, Sam, Vanessa and Fran who have worked tirelessly to make the Chicken Dance happen. Ngā mihi to Anna for being an awesome chicken wrangler, Vanessa and Fran for officiating, Nicky and David for supplying fencing and to our neighbour Rochelle for very kindly letting us borrow her hens for the morning (they were stars and were very well cared for!) 🙌

Ngā mihi, a BIG THANK YOU to this years amazing Chicken Dance Sponsors: Hahei Richardsons Real Estate, Good Whites Teeth Whitening, Coromandel Ocean Adventures, LUSH photography, Countdown Whitianga, Harry and Her and Hay Honey.

Congratulations to all our prize winners!!! And a big thank you to our amazing fundraising team here at Whenuakite Country Kids. We really appreciate everyone's support for our community based ECE centre.





*Nau mai Haere mai, Welcome!*



**Tui**



**Charlotte**



**Thea**

*Haere ra e hoa, Farewell friends*



**Betty**



**Nova**



**Noah**



**Brodie**



# Changes to childcare assistance



**More families will qualify.**

Income thresholds are increasing from 1 April 2023.

Read more information at:

[workandincome.govt.nz/childcare-changes](https://workandincome.govt.nz/childcare-changes)

WORK AND INCOME  
TE HIRANGA TANGATA



MINISTRY OF SOCIAL  
DEVELOPMENT  
TE MANATŪ WHAKAHIATO ORA

The rates for childcare assistance have increased since 1st of April 2023. You may be eligible, please check here: [childcare-assistance-tables/childcare-subsidy](https://childcare-assistance-tables/childcare-subsidy) or ask Katherine at the office for more info 😊



# WCK BIKE DAY

Following tamariki interest in biking, we are having a bring your bike to WCK day and have some biking fun in the WCK car park, on

## Tuesday the 9th of May 2023!

If your child/ren are enrolled on Tuesday the 9th, bring your child's bike and helmet and leave by the ramp! If raining we will postpone the bike day till Thursday the 11th of May 2023.

PIC•COLLAGE

Pink Ribbon Shared  
Morning tea at WCK  
Thursday the 25th of  
May 10am

In Aotearoa, 9 wahine are diagnosed with breast cancer every day. Please join us in coming together to raise awareness and funds to support patients and life saving research 🌸 <https://pinkribbonbreakfast.co.nz/page/whenuakitecountrykids>  
Ngā mihi x

BREAST  
CANCER  
AWARENESS

# WCK WORKING BEE!



Friday 26th May from 3pm.  
Sausage sizzle and  
beverages provided 😊 We  
hope to see you all here! ❤️👍







**HIKUI SCHOOL**  
**HUNTING COMP**  
**23-25TH JUNE**

GET YOUR TICKETS VIA OUR FACEBOOK,  
INSTAGRAM OR SCAN OUR QR CODE  
HIKUI SCHOOL HUNTING COMP





**ADULTS**

- BEST HOOKS
- AVERAGE WEIGHT
- MYSTERY WEIGHT
- BIGGEST BOAR 1ST, 2ND, 3RD
- MOST POSSUMS
- HEAVIEST SNAPPER (NEW)

**LADIES (NEW CATEGORY)**

- BIGGEST BOAR

**KIDS**

- RABBIT, MAGPIE, POSSUM & HARE
- HEAVIEST SNAPPER (NEW)
- MYSTERY WEIGHT SNAPPER (NEW)

**ENTRY FEES**

- ADULTS \$50
- KIDS (UNDER 12) \$10

**ENTRIES CLOSE**

- MIDNIGHT, WEDNESDAY 21ST JUNE

**BBQ & BURGERS**

- FOR ALL ENTRANTS

**RAFFLES & MERCH**

- RAFFLES TO PURCHASE ON THE DAY
- MERCH AVAILABLE EARLIER AND ON THE DAY

**MAJOR SPONSORS**

  
Hikui Honey

  
CONCRETE PLACING

  
SAVER ELECTRICAL

  
Husqvarna

  
STONEY CREEK

  
STORMS CONTRACTING

  
PRESCOTT'S GARAGES

  
Richardsons

  
BLUE DUCK STATION

  
HINGZ ADVENTURE

  
ADVENTURE

GET YOUR TICKETS VIA OUR FACEBOOK OR INSTAGRAM  
HIKUI SCHOOL HUNTING COMP



Arohanui from us all at Whenuakite Country Kids x

